

What to Expect

SET YOUR SIGHTS ON GROWTH

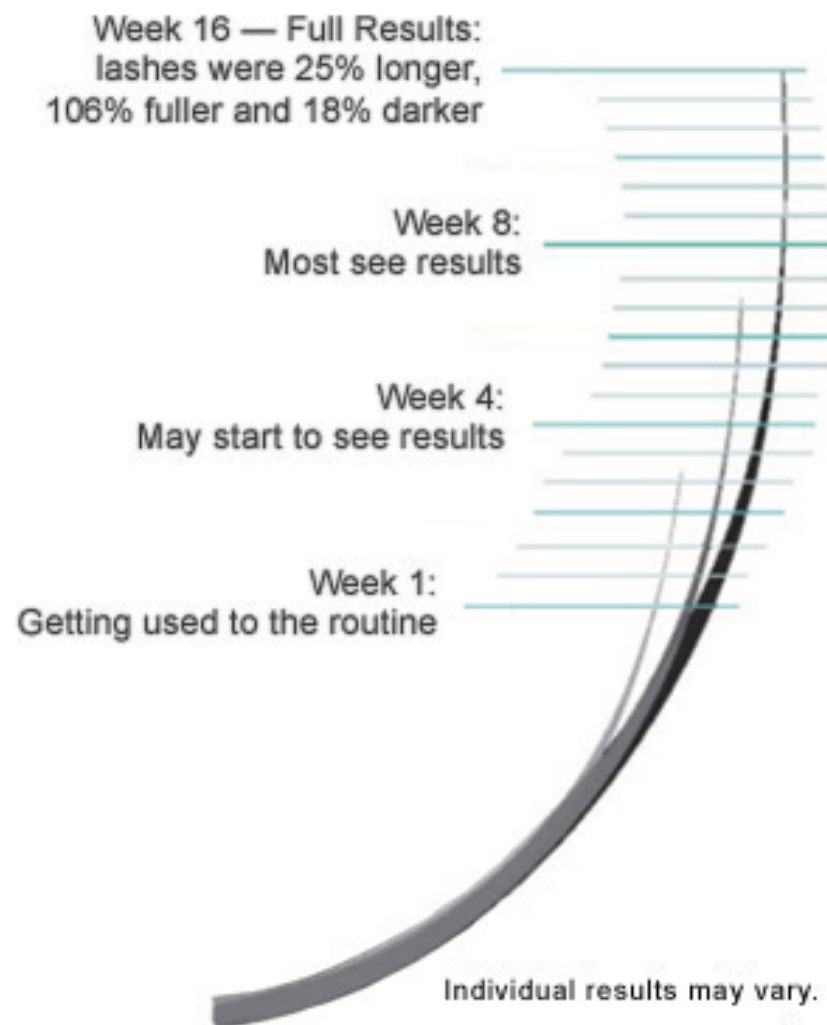
Great eyelashes don't just happen overnight. That's why it's important to note that Latisse™ (bimatoprost ophthalmic solution) 0.03% works gradually and remarkably — starting at 4 weeks with full results after 16 weeks. Once you begin treatment, you could start to see results in as little as 4 weeks, but you must continue applying the topical treatment each night and follow the directions for best results. Remember results are gradual over time.

Your eyelashes will experience real measurable growth.

Latisse™ works from the inside out. As the treatment progresses, you'll begin to see changes in length, thickness and darkness gradually. After week 16, you'll see the full effect of Latisse™ — and so will others.

There are possible side effects.

Throughout clinical trials, some users did experience itchy eyes and eye redness. However, some users found that these irritations went away once they became accustomed to the product or began applying it properly. As with any prescription treatment, always consult with your doctor for information and proper usage of Latisse™ solution.



In the clinical study, 78% saw significant increases in all of the following three measurements at week 16: length, fullness and darkness.